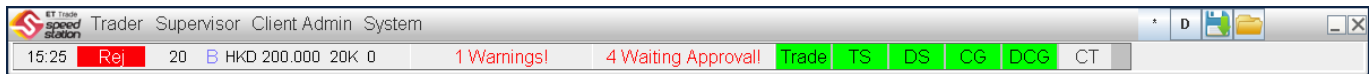
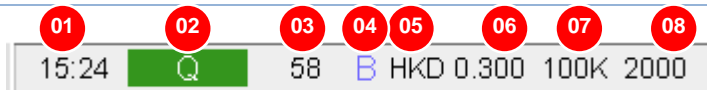


1.2 Status Bar

Overview of Status Bar of ETTSS



1.2.1 Latest Trade Info



Here are the field names and their description of values on trade info from left to right

1. Time: Order Time / Trade Time
2. Status:
 - i. Queued (Q) Order has queued/partially filled in AMS
 - ii. Cancel (CN) Order/Trade is cancelled
 - iii. Rejected (Rej) Order/Trade is rejected by AMS, user can perform re-enter in some cases (Please refer to Price Warning Mechanism)
 - iv. Wait (W) Order is pending to submit to AMS
 - v. Filled (F) Order is fully filled by market, trade is submitted to market
3. Stock Code: Security Code
4. Bid/ Ask: Bid (B) or Ask (S)
5. Currency Code(eg. HKD, JPY)
6. Price: Order price, filled price or trade price
7. QTY: Total order quantity
8. QTY: Filed order quantity

1.2.2 Warnings



A reminder for price warnings and trade alerts, and this is a hyperlink to access User Messages Enquiry

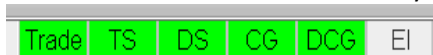
1.2.3 Warnings Pending For CC Approval



A reminder for Credit Check Approval that is pending for supervisors' approval and this is a hyperlink to access Credit Check Approve (for supervisor only).

1.2.4 Server And Application Status Indicators

6 Indicators to show the availability of ETTSS trading service.

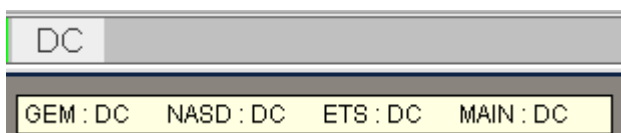


Color	Trade (Trade Status)	TS (Trade Server)	DS (Data Server)	CG (Central Gateway)	DCG (DropCopy)
Green	Start of Trade	Trade Service Available	Data Service Available	OCG session Logged in	DropCopy session Logged in
Yellow	---	---	---	OCG session available for login	DropCopy session available for login
Red	End of Trade	Trade Service not available	Data Service not available	OCG session forced logout	DropCopy session forced logout
Grey	---	---	---	---	DropCopy is not Subscribed

1.2.4.1 Main Market Status

The status box on the right describes the market status of Main Market.

NO: Not Yet Open
 OI: ORDER INPUT
 NC: PRE-ORDER MATCHING
 MA: ORDER MATCHING
 BL: BLOCKING
 CT: CONTINUOUS TRADING
 EI: EXCHANGE INTERVENTION
 CL: CLOSE
 OC: ORDER CANCEL
 DC: DAY CLOSE



In addition, user can check the market status of GEM market (GEM), NASDSQ (NASD) and Extended Trading Securities (ETS) by mouse-over the Main Market Status box.

1.2.5 Side Bar

ETTSS introduces sidebar for quick access. Whenever user minimizes the window and functions inside ETTSS, the functions are grouped by their functionality and access rights on the side bar. Users can resume the usage by clicking the boxes on the side bar. After that, the selected function will be brought to the top immediately.

ETTSS functions are grouped according to the functionalities. The grouping and colour of functions are the same as they are shown in the menu. The number on the top right of corner of each colour box on the side bar, shows the number of functions had opened under specific groupings.

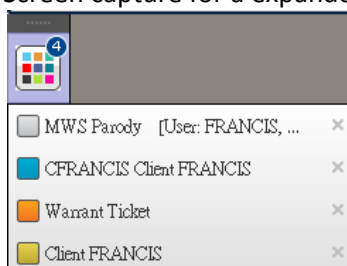
Grouping Definition of Side Bar

Sidebar Groupings	Colour	Functions (ETTSS has limited the number of opening function)*
	Multiple colours with white background	MWS Parody, Security Ticket, Warrant Ticket and AE Ticket
	Grey	User Messages Enquiry, Change Password, MPS Help and Printer Setting
	Purple	CC Approve
	Lime	Client Info & Client List
	Blue	Bulk Cancel, Broker Order Activity Enquiry (Static) and Trading History Enquiry (Static)
	Orange	Cash In/Out, Stock In/Out and Currency Maintenance
	Yellow	Client Maintenance, Client User Setting, User Maintenance and User Hierarchy
	Green	Logon Status, Trade Status, OCG Login and DropCopy Login
	Brown	Stock Master, User Preference, Sys Parameter Maintenance, Role Function Admin, System Control Maintenance, Audit Trail Enquiry and Data Exchange

*Limitation of MPS, Tickets and other functions

1. Trader Functions (except User Messages Enquiry):
MWS Parody, Security Ticket, Warrant Ticket and AE Ticket can have a maximum of **4 windows opened**, either single function or a mixture of MPS and all-in-one Tickets.
2. All other functions, including User Messages Enquiry are limited to 1 only.

Screen capture for a expanded group:



User can click the “X” icon by mouse to close the application.