

### 1.3 Layout Maintenance

ETTSS users can save the position and layout of MPS screens by using the functions in layout maintenance menu. The layout will be restored at ETTSS start-up when user login in. The menu is located on the top right of ETTSS application window. The maintenance menu consists of 4 functions: Asterisk mode/ Q Mode, Load Default Layout, Save Layout and Load Layout.

#### Asterisk Mode / Q Mode

Asterisk Mode and Q Mode granted users to switch between MPS and trading tickets in quick way, by using 101-keyboard or HKEX's customized keyboard only.

#### Step1 Select Mode

By left-clicking the button, user can switch between Asterisk Mode and Q Mode.

Asterisk Mode (Recommended for 101-keyboards) Q Mode (Recommended for Customized Keyboards)



#### Step2 Assign Quick Keys to MWS Parody and Trading Tickets

User uses mouse to select the quick key boxes in MWS Parody and Trading Tickets, and then type a character or number to the window as an assigned quick key. The quick key can be reset to space when user closes and restarts the function with assigned quick keys. The keys will be kept when user uses Save Layout and Load Layout function mentioned later.

Quick Keys of MWS Parody  
Before



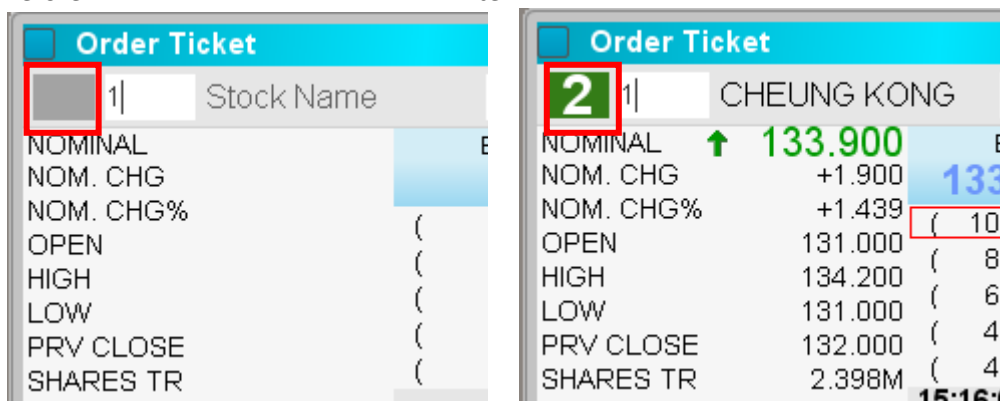
After



Quick Keys of Trading Tickets

Before

After

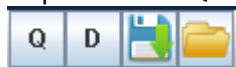


**Step3 Apply quick keys usage**

Quick keys assigned in ETSS can be triggered anytime whenever user needs.

**For Exchange's customized-keyboard:**

Step3.1: Select Q Mode

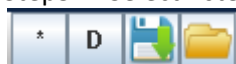


Step3.2: Press QTE REQ

Step3.3: Press Assigned Keys

**For 101-keyboard:**

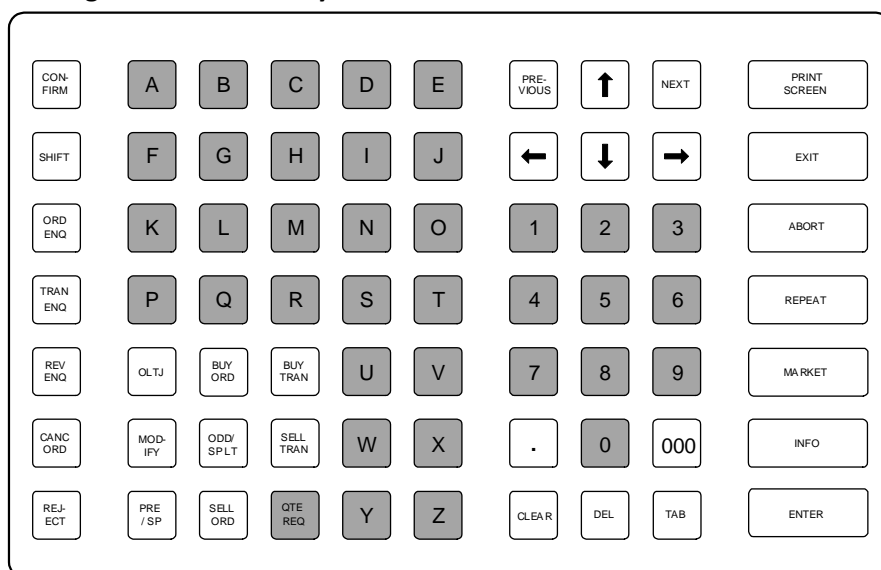
Step3.1: Select Asterisk Mode



Step3.2: Press Asterisk (\*)

Step3.3: Press Assigned Keys

**Exchange's customized-keyboard**



After that, the MPS window, or ticket with the assigned key is brought to the top of ETSS platform. User can switch between different trading window by repeating step 3.2 and 3.3 without changing modes.

### Load Default Layout

User can click the “D” button by using mouse which will close all existing windows in ETSS, and reload factory default layout. The factory default layout has 1 MPS window, as shown below. The factory default layout cannot be changed.

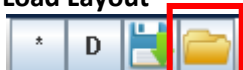


### Save Layout



By clicking on the Save Layout button, ETSS will save the existing layout, including all opened windows, their positions and saved quick keys as a reference layout. The saved layout is used as reference for ETSS start-up and layout restoration when user presses Load Layout.

### Load Layout



By clicking on the Load Layout button, ETSS will force close all the windows and menu opened. After that, ETSS will load the reference layout that had stored before or factory default layout if no reference layout can be found. The MPS screen, tickets, menus and quick keys will be restored and allocated to the location memorized in last save action.