

2.1.3 Security Ticket

Security Ticket is one of the three All-in-One Tickets introduced by ETSS. All-in-one ticket is designed for users who prefer to use multiple functions in one single ticket. So users can perform multiple functions like Stock Quotation, send Bid/Ask order and Modify/Enquire order in the same window. All the functions of all-in-one security ticket can be completed by 101-keyboards or HKEX customized keyboard.

Overview of Security Ticket with Client Account mapped

E TNE T05 etnet05				
388 HKEX		buy sell		
NOMINAL	179.50	BID	ASK	
NOM. CHG	0.00	178.30	180.00	
NOM. CHG%	0.00	(2) 1200	1000 (1)	
HIGH		(1) 100	100 (1)	
LOW		(2) 600	500 (2)	
PRV CLOSE	179.50	(1) 100	200 (1)	
SHARES TR	11690	(1) 100	400 (1)	
TURNOVER	2067265	15:26:00 D	5	5.00
SPREAD	0.10 / 0.10	15:34:27 X	700	177.70
		15:44:19 X	900	177.90
BID	178.30	180.00	ASK	
9985		9985		
9985		+1s		
-1s		9985		
9985		+2s		
-2s		9985		
9985		9985		
9985		+3s		
-3s		9985		
9985		+4s		
-4s		9985		
9985		9985		
Sell	-2,200	Q	2,100	-2,200

Features of Security Ticket:

Set Default Client- Each ticket can be assigned with one client account as default account. Trader can perform trading and quotation without inserting client account again.

Stock Quote– By entering stock code and press enter, corresponding price information will be displayed on particular information panels.

Order processing – After assigned particular stock on ticket, user will be able to switch to Bid/Ask order panel and place the order with the same ticket.

Order book– After assigned particular stock on ticket, by pressing the Queue button on ticket, the panel will be switched to order book. Modification and cancellation of orders can be performed in this interface.

Sell all shares with shortcut–Pressing the SELL button on ticket, the panel will be switched to Sell order panel with the Sellable Quantity of that stock populated in the Qty field.

Hot Keys

ETTSS supports HKEX's customised keyboard and 101-keyboard, and the function key mapping is shown below:

ETTSS Functions	101-keyboard	HKEX's customised
Bid	F1	BUY ORD
Ask	F11	SELL ORD
Security Enquiry	F4	MARKET
Order Enquiry	F6	ORD ENQ
Sell all stocks	F7	SELL TRAN
Confirm	Alt + F3 (place orders)	CONFIRM
Cancel Order	Alt + F2	CANCEL
Modify Order	Alt + F7	MODIFY
Clear	Esc	ABORT

2.1.3.1 Set Default client

Client account can be assigned on ticket by entering the client code on the text field at the top right corner. Once entered, system will indicate the assigned client by showing client code, client name and Mobile Phone no. on title bar of the ticket. Assigned client of this ticket will be set as default client when placing order or viewing order book

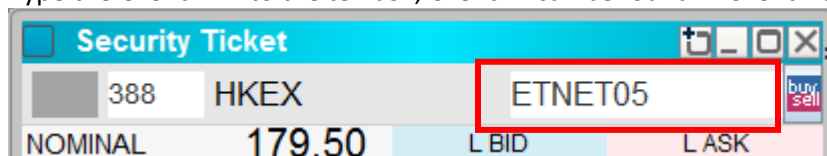
Step 1:

Open the Security Ticket, user can insert the Client ID for the ticket



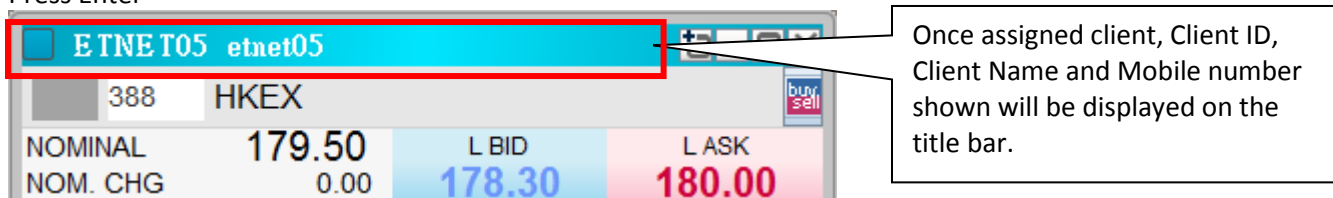
Step2:

Type the Client ID into the text box, Client ID can be found in Client List in Trader Menu



Step3:

Press Enter



The client assigned to the ticket will be removed when user closes and reopens the security ticket. User can open multiple tickets and assign one client for each ticket.

2.1.3.2 Stock Quote

After assigned the stock code to the ticket, corresponding price information will be shown on several panels. Panels provide stock information as shown below:

The screenshot shows a stock quote window for '388 HKEX'. The interface is divided into several sections:

- Price Panel:** Displays the current nominal price (179.50), change (0.00), and high/low prices. It also shows the best bid (178.30) and best ask (180.00) prices.
- Bid/Ask Queue:** Shows the top 5 bid and ask orders with their respective quantities and prices. The top ask order is highlighted with a red box.
- Transaction Log:** Displays the last three trades with their timestamps, directions (D for Debit, X for Credit), and prices.
- Broker Queue:** Shows the top 5 liquidity providers for both bid and ask sides, with their order sizes and time priority (e.g., +1s, +2s).

Callouts in the image point to these specific sections: 'Insert the Security Code for quotation' points to the top header; 'Price panel' points to the top price information; 'Bid/Ask Queue' points to the order book; 'Transaction Log' points to the trade history; and 'Broker Queue' points to the liquidity providers.

User Interface

Price panel – Display corresponding stock price information including nominal, change, change %, open price, highest price, lowest price, previous closed price, number of shares, turnover and no. of trades.

Bid/Ask Queue – Display the best bid price, best ask price and Bid/Ask Queues of 5 spreads on the market

Transaction Log – Show the last 3 tickers of trades.

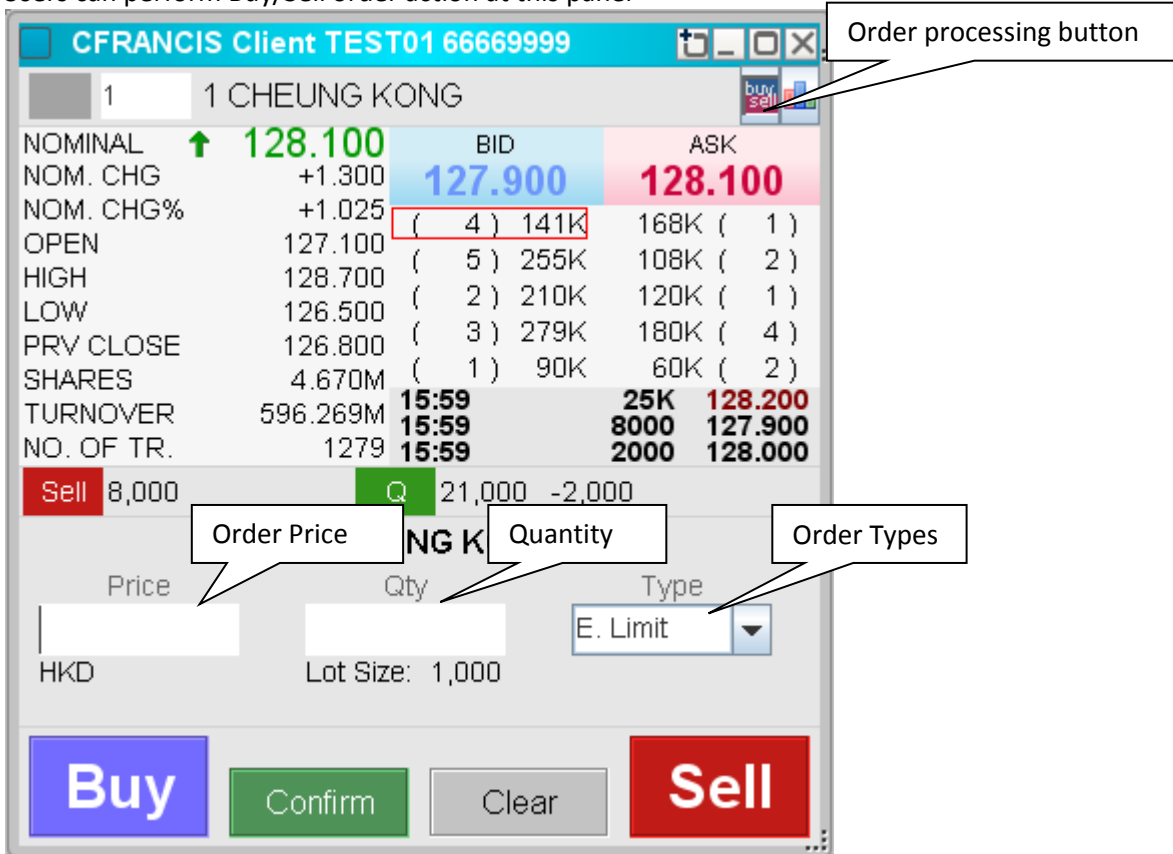
Broker Queue – Display brokers queues on the market. ETSS all-in-one ticket will highlight the Liquidity Providers for warrants.

The black rectangle frames indicate the Liquidity Providers of the security.

CFRANCIS Client FRANCIS			
10252 BP-N225@EC1406A			
NOMINAL	↑ 0.095	BID	ASK
NOM. CHG	+0.002	0.094	0.095
NOM. CHG%	+2.150	(1) 3.0M	3.0M (1)
OPEN	0.097	(1) 3.0M	3.0M (1)
HIGH	0.097	(1) 3.0M	3.0M (1)
LOW	0.095	()	()
PRV CLOSE	0.093	()	()
SHARES TR	140.000K	15:56:41	100K 0.095
TURNOVER	13.380K	09:33:52	40K 0.097
NO. OF TR.	2		
BID	0.094	0.095	ASK
9671		9671	
-1s		+1s	
9671		9671	
-2s		+2s	
9671		9671	
Sell		Q	

2.1.3.3 Orders Processing

By clicking the particular price spread on the Bid/Ask queue, the bottom panel will be switched to order panel
Users can perform Buy/Sell order action at this panel



The screenshot shows the 'Order processing button' in the top right corner. The main panel displays market data for CHEUNG KONG, including NOMINAL, NOM. CHG, NOM. CHG%, OPEN, HIGH, LOW, PRV CLOSE, SHARES, TURNOVER, and NO. OF TR. The BID and ASK prices are 127.900 and 128.100, respectively. The order entry panel includes fields for Price, Qty, and Type, with a dropdown menu for 'E. Limit'. The Lot Size is set to 1,000. The bottom panel features 'Buy', 'Confirm', 'Clear', and 'Sell' buttons.

CFRANCIS Client TEST01 66669999		1 CHEUNG KONG	
NOMINAL	↑ 128.100	BID	ASK
NOM. CHG	+1.300	127.900	128.100
NOM. CHG%	+1.025	(4) 141K	168K (1)
OPEN	127.100	(5) 255K	108K (2)
HIGH	128.700	(2) 210K	120K (1)
LOW	126.500	(3) 279K	180K (4)
PRV CLOSE	126.800	(1) 90K	60K (2)
SHARES	4.670M	15:59	25K 128.200
TURNOVER	596.269M	15:59	8000 127.900
NO. OF TR.	1279	15:59	2000 128.000
Sell	8,000	Q	21,000 -2,000
Price	Qty	Type	
HKD	Lot Size: 1,000	E. Limit	
Buy	Confirm	Clear	Sell

User Interface

Order Price– User can input the price of order in this field

Quantity– User can input the quantity of the order in this field

Order types– Select the order type from combo box, provides Enhanced Limit (default), Auction, Auction Limit, Limit and Special Limit.

Buy Button–Switch to Buy order interface

Confirm Button –To confirm the order and send to AMS queue if the order passes the validation and credit check

Clear–Clear all the values of all fields

Sell Button–Switch to Sell order interface

Bid/Ask Order User interface

Bid Order

Step 1

Open the Security Ticket and map Client Account

CFRANCIS Client TEST01 66669999									
1 CHEUNG KONG									
NOMINAL	↑	128.100	BID		ASK				
NOM. CHG		+1.300	127.900		128.100				
NOM. CHG%		+1.025	(2) 7000		4000 (2)				
OPEN		127.100	(1) 10K		2000 (1)				
HIGH		128.700	(2) 20K		()				
LOW		126.500	(2) 20K		()				
PRV CLOSE		126.800	(1) 10K		()				
SHARES		4.670M							
TURNOVER		596.269M	15:59		25K	128.200			
NO. OF TR.		1279	15:59		8000	127.900			
			15:59		2000	128.000			
BID		127.900	128.100	ASK					
4158	1197	5465	-5s	7134	4086	4977	8906		
6699	1197	1197	+1s	+3s	+4s	0891			
-1s	1197	1197	1197	4159	1799	4169	4558		
4026	1197	-4s	-6s	+2s	8939	8176	0488		
1197	1197	4159	4159	5465	2056	2014	8176		
-2s	-3s	2276	1197	6389	1197	8393	8730		
6868	1138	6699	1197	4068	1197	6825	5929		
6699	0229	0896	1197	1197	1197	9055	4409		
1197	0229	1197	4378	5338	5465	5927	2447		
5465	1197	4378	4377	1196	0229	8577	8944		
Sell	5,000		Q	6,000	-9,000				

Step2

Use Arrow keys (↑ ↓ ←→) on keyboard, or mouse to move the quotation (Red Frame) for suitable price on Bid/Ask Queue.

CFRANCIS Client TEST01 66669999									
1 CHEUNG KONG									
NOMINAL	↑	128.100	BID		ASK				
NOM. CHG		+1.300	127.900		128.100				
NOM. CHG%		+1.025	(2) 7000		4000 (2)				
OPEN		127.100	(1) 10K		2000 (1)				
HIGH		128.700	(2) 20K		()				
LOW		126.500	(2) 20K		()				
PRV CLOSE		126.800	(1) 10K		()				
SHARES		4.670M							
TURNOVER		596.269M	15:59		25K	128.200			
NO. OF TR.		1279	15:59		8000	127.900			
			15:59		2000	128.000			
BID		127.900	128.100	ASK					
4158	1197	5465	-5s	7134	4086	4977	8906		
6699	1197	1197	+1s	+3s	+4s	0891			
-1s	1197	1197	1197	4159	1799	4169	4558		
4026	1197	-4s	-6s	+2s	8939	8176	0488		
1197	1197	4159	4159	5465	2056	2014	8176		
-2s	-3s	2276	1197	6389	1197	8393	8730		
6868	1138	6699	1197	4068	1197	6825	5929		
6699	0229	0896	1197	1197	1197	9055	4409		
1197	0229	1197	4378	5338	5465	5927	2447		
5465	1197	4378	4377	1196	0229	8577	8944		
Sell	5,000		Q	6,000	-9,000				

Transfer security price to PRICE field

1 CHEUNG KONG		
Price	Qty	Type
127.700		E. Limit
HKD	Lot Size: 1,000	
Buy	Confirm	Clear
Sell		

Step3

By clicking the“BUY” button, the frame and the panel of the ticket will turned to **blue** representing the user are allowed to place buy order of this ticket. The price will be automatically transferred to the price field with reference to the location of Red Frame. Input Quantity and select ordertype to proceed.

CFRANCIS Client TEST01 66669999			
1 CHEUNG KONG			
NOMINAL	↑ 128.100	BID	ASK
NOM. CHG	+1.300	127.900	128.100
NOM. CHG%	+1.025	(2) 7000	4000 (2)
OPEN	127.100	(1) 10K	2000 (1)
HIGH	128.700	(2) 20K	()
LOW	126.500	(2) 20K	()
PRV CLOSE	126.800	(1) 10K	()
SHARES	4.670M	15:59	25K 128.200
TURNOVER	596.269M	15:59	8000 127.900
NO. OF TR.	1279	15:59	2000 128.000
Sell 5,000 Q			
Buy 1 CHEUNG KONG			
Price	Qty	Type	
127.70	1000	E. Limit	
HKD Lot Size: 1,000			
Buy Confirm Clear Sell			

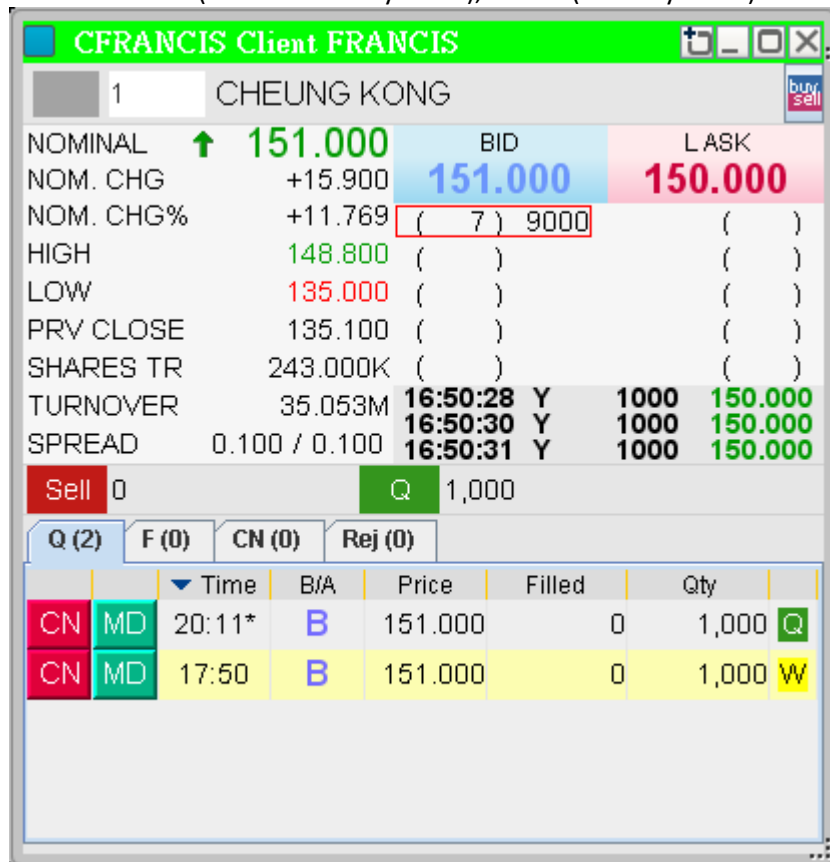
Step4

Press ENTER or click Confirm button

CFRANCIS Client TEST01 66669999			
1 CHEUNG KONG			
NOMINAL	↑ 128.100	BID	ASK
NOM. CHG	+1.300	127.900	128.100
NOM. CHG%	+1.025	(2) 7000	4000 (2)
OPEN	127.100	(1) 10K	2000 (1)
HIGH	128.700	(2) 20K	()
LOW	126.500	(2) 20K	()
PRV CLOSE	126.800	(1) 10K	()
SHARES	4.670M	15:59	25K 128.200
TURNOVER	596.269M	15:59	8000 127.900
NO. OF TR.	1279	15:59	2000 128.000
Sell 5,000 Q			
Buy 1 CHEUNG KONG			
Price	Qty	Type	
127.7	1000	E. Limit	
2nd Confirm Clear			

Step5

Press CONFIRM (Customised Keyboard), SPACE (101-KeyBoard) or click “2ndConfirm” button



CFRANCIS Client FRANCIS		1 CHEUNG KONG		
NOMINAL	↑ 151.000	BID	ASK	
NOM. CHG	+15.900	151.000	150.000	
NOM. CHG%	+11.769	(7) 9000	()	
HIGH	148.800	()	()	
LOW	135.000	()	()	
PRV CLOSE	135.100	()	()	
SHARES TR	243.000K	()	()	
TURNOVER	35.053M	16:50:28 Y	1000 150.000	
SPREAD	0.100 / 0.100	16:50:30 Y	1000 150.000	
		16:50:31 Y	1000 150.000	
Sell	0	Q	1,000	
Q (2)	F (0)	CN (0)	Rej (0)	
Time	B/A	Price	Filled	Qty
20:11*	B	151.000	0	1,000 Q
17:50	B	151.000	0	1,000 W

Security Ticket will resume to default setup. The bid order queue in AMS and the status bar on ETSS will be updated with this order information immediately. On the contrary, title bar of Security Ticket turns into **RED** if the order is rejected

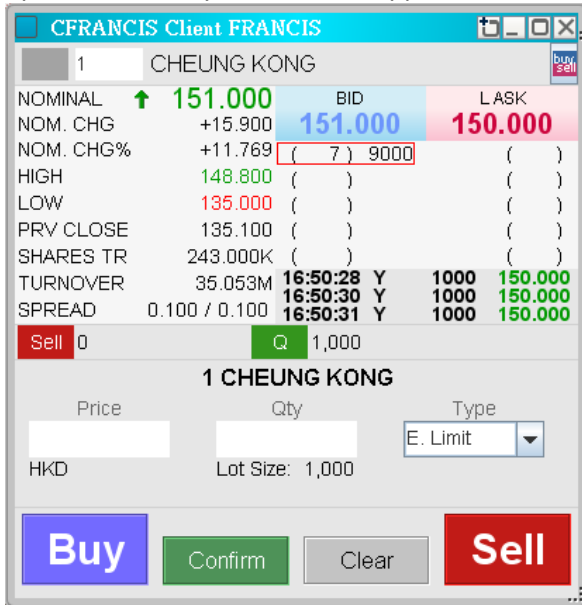


17:46 Q 1 B HKD 127.000 1000 0

Ask Order

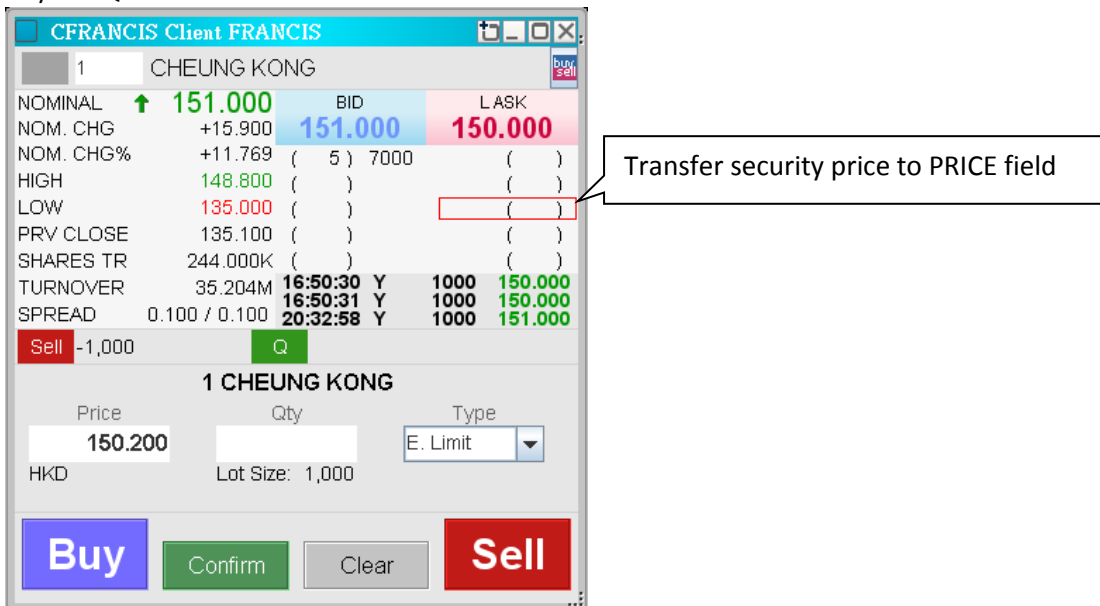
Step 1

Open the Security Ticket and mapped with Client Account



Step2

Use Arrow keys (↑ ↓ ←→) on keyboard, or mouse to move the quotation (Red Frame) for suitable price on Bid/Ask Queue.



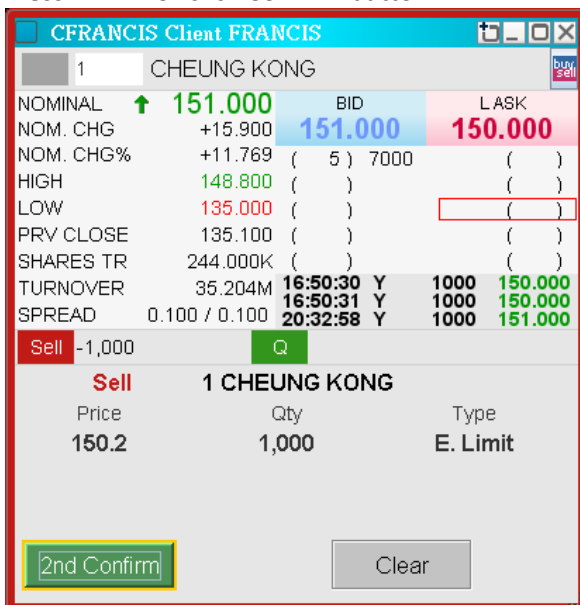
Step3

By clicking the“SELL” button, the frame and the panel of the ticket will turn to red representing the user are allowed to place ask order of this ticket. The price will be automatically transferred to the price field with reference to the location of Red Frame. Input Quantity and select order type to proceed.



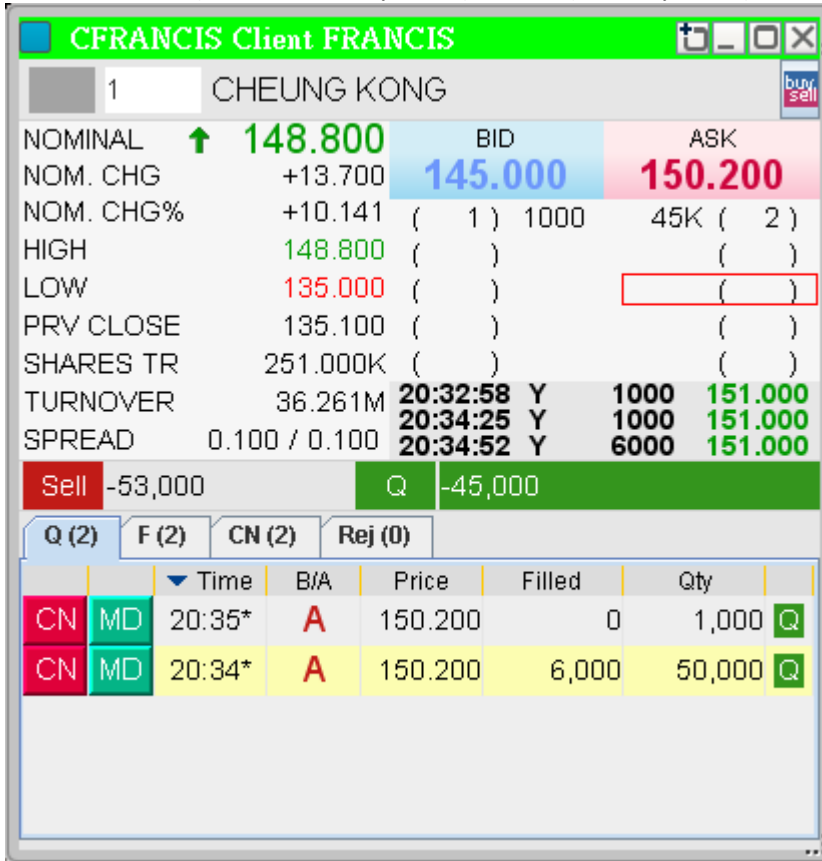
Step4

Press ENTER or click Confirm button



Step5

Press CONFIRM (Customised Keyboard), SPACE (101-KeyBoard) or click “2ndConfirm” button



Time	B/A	Price	Filled	Qty
20:35*	A	150.200	0	1,000
20:34*	A	150.200	6,000	50,000

Security Ticket will resume to default setup. The ask order queue in AMS and the status bar on ETSS will be updated with this order information immediately. On the contrary, title bar of Security Ticket turns into **RED** if the order is rejected

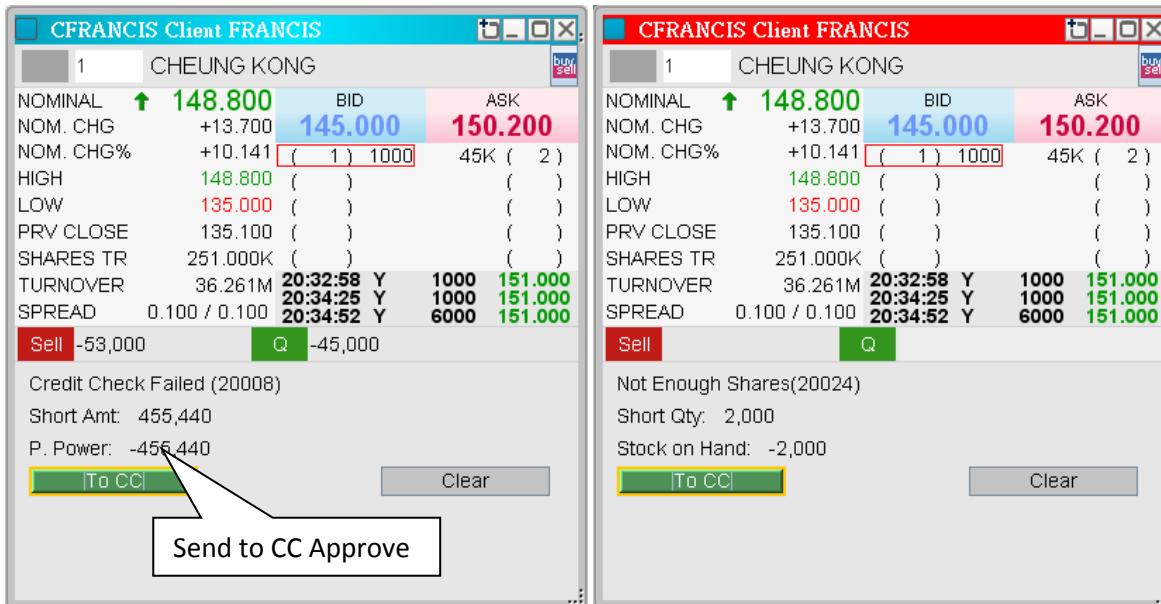


Validation and Credit Check

Security Tickets will prompt red frame to indicate the invalid input, if the order fail the validation checking.



EP can apply credit checking to clients, ETSS Security Ticket will show a dialog box including “To CC” for Credit Check Approve, if the order is short in either amount or stock shares. Please refer to CC Approve for details.

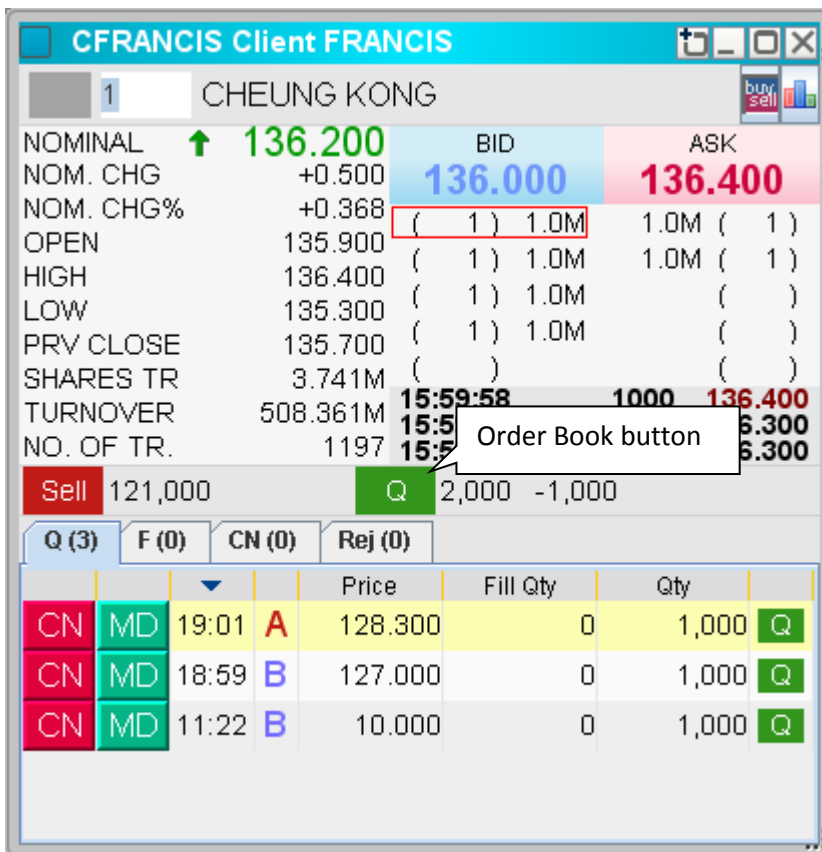


2.1.3.4 Order Book

Security Ticket has order book function in the lower panel. User can review the orders placed by selected client. The orders are grouped in different status and placed in Queuing, Filled, Canceled and Rejected tabs accordingly. Switching tabs can be done by clicking the tab. Modification and cancel of orders can be performed in this panel as well.

User can access the order book function in Security Ticket with below steps

- 1) By Pressing the "Q" button with mouse's left clicks,
- 2) Press F6 on 101-keyboard,
- 3) Press ORD ENQ on HKEX's customised keyboard.



After that, the bottom panel of Security Ticket will switch to order book, showing the queued(Que.), filled or partial filled, cancelled (CN) and rejected (Rej) orders of selected client. Repeat the action of step 1 will resume the ticket to security enquiry.

2.1.3.4.1 Modify Order in Security Ticket

The modify order can be submitted through the order book of Security Ticket.

Customized Keyboard

- Step1: Use Arrow Keys to highlight
- Step2: Press MODIFY
- Step3: Input Data
- Step4: Press CONFIRM

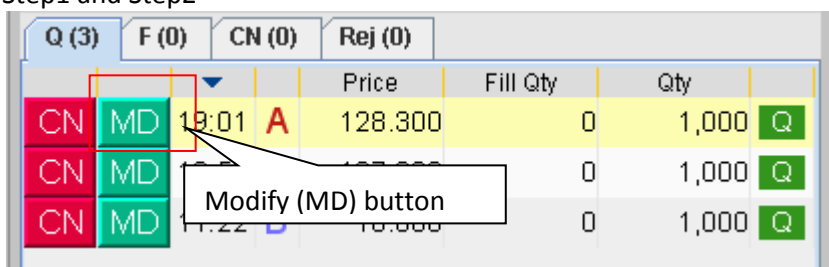
101-Keyboard only

- Step1: Use Arrow Keys to highlight
- Step2: Press ALT+F7
- Step3: Input Data
- Step4: Press ALT+F3

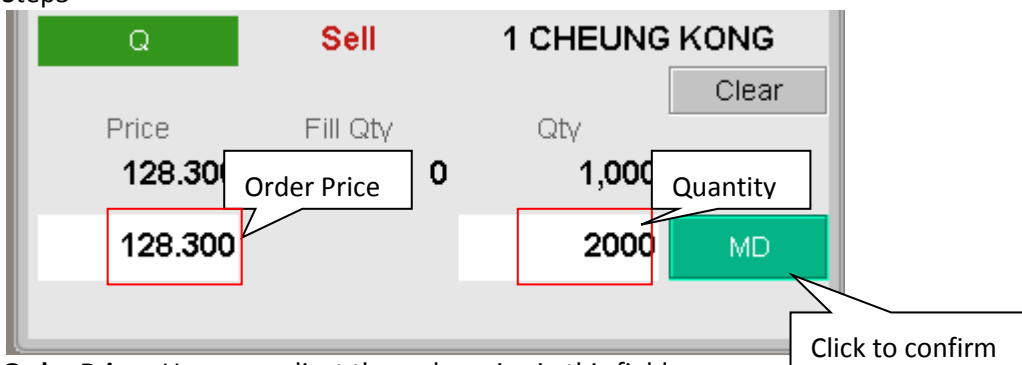
Mouse and 101-Keyboard

- Step1: Use mouse to select
- Step2: Click MD button
- Step3: Input Data
- Step4: Click MD button again

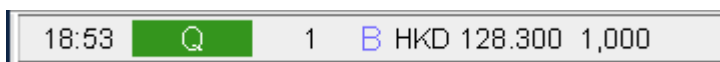
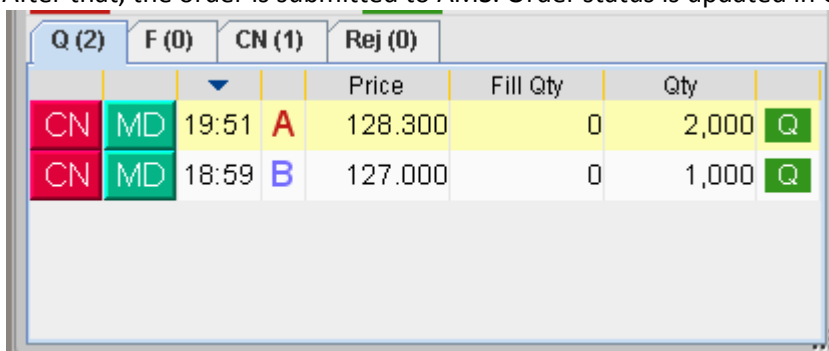
Step1 and Step2



Step3



After that, the order is submitted to AMS. Order status is updated in Order book and Status bar.



2.1.3.4.2 Cancel Order in Security Ticket

The cancel order can be submitted through the order book of Security Ticket.

Customized Keyboard

- Step1: Use Arrow Keys to highlight
- Step2: Press CANC
- Step3: Press CONFIRM

101-Keyboard only

- Step1: Use Arrow Keys to highlight
- Step2: Press ALT+F2
- Step3: Press ALT+F3

Mouse and 101-Keyboard

- Step1: Use mouse to select
- Step2: Click CN button
- Step3: Click CN button again

Step1 and Step2

Q (3)	F (0)	CN (0)	Rej (0)		Price	Fill Qty	Qty	
CN	MD	19:01	A		128.300	0	1,000	Q
CN					100.000	0	1,000	Q
CN					100.000	0	1,000	Q

Step3

Q Sell 1 CHEUNG KONG

Clear

Price	Fill Qty	Qty	
128.300	0	2,000	CN

Click to confirm

After that, the order is submitted to AMS. Order status is updated in Order book and Status bar.

Q (1)	F (0)	CN (2)	Rej (0)		Price	Fill Qty	Qty	
					128.300	0	2,000	CN
					10.000	0	1,000	CN

18:35	CN	1	A	HKD 128.300	2,000
-------	----	---	---	-------------	-------

2.1.3.5 Sell all shares with shortcut



When pressing the SELL all button, bottom panel will be switched to Sell interface. Order price will be filled with the best sell price and Quantity will be filled with the qty equals all shares in hand. Users are able to sell all shares in hand immediately by pressing “CONFIRM” to send the order to market