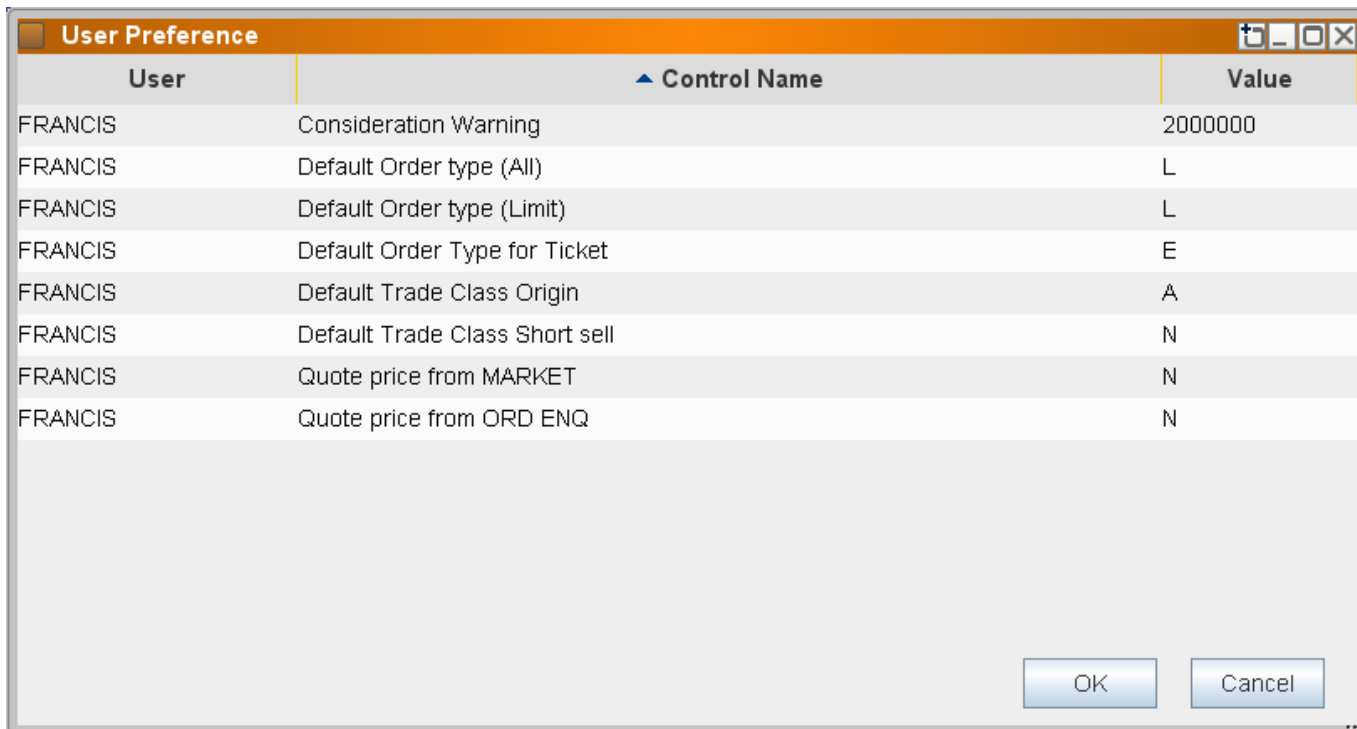


### 2.4.10 User Preference

This function allows all users to view and update the User can specify the default setting in the user profile. Setting such as default order type, trade class origin, trade class short sell and source of quote price can be set in this function. After the setting saved, the adjusted changes will be reflected immediately.

By default User Preference is using the values of System Control Parameter when the user is newly created. All default functions and parameters in User Preference are applied as reference for the users once User Preference is updated.

**Interface:**



**Interface Item**

Items	Remarks
Control Name	The description of the user setting
Value	Allow user to change the setting by enter the value ( refer to 2.4.10.1)

### 2.4.10.1 User Preference – Parameter

#### Parameter:

Parameter	Description	Remarks
Consideration Warning	Min amount to trigger consideration warning per order/trade	2000000
Default Order type (All)	Default order type for Order/Trade Input (A, E, I, L, S)	Allow user specify default order type for Input Order [PRE/SP+BUY ORD or PRE/SP+SELL ORD] E = Enhanced Limit L = Limit S = Special Limit A = At-auction I = At-auction Limit
Default Order type (Limit)	Default order type for Limit Order input (replace L to A, E, I, L, S)	Allow user specify default order type for Input Order (Limit) [BUY ORD or SELL ORD] : E = Enhanced Limit L = Limit S = Special Limit A = At-auction I = At-auction Limit
Default Order type for ticket	Default order type for Order/Trade Input (A, E, I, L, S)	Allow user specify default order type for All-in-One Ticket E = Enhanced Limit L = Limit S = Special Limit A = At-auction I = At-auction Limit
Default Trade Class Origin	Default value of trade class origin during order/trade (A, P, space)	Default value of trade class origin Origin Indicator: A = Agency P = Principal "" = None
Default Trade Class Short sell	Default value of short sell during order/trade (A, C, F, M, N, Y)	Default value of trade class short sell:  Short Sell Indicator: A = Index Arbitrage Shortsell N = Non Shortsell M =Market Maker Shortsell Y = Shortsell F = Stock Futures Hedging Shortsell C = Shortsell Cover
Quote Price from Market	Selected Price in MARKET is quoted for order/trade input (Y-Enable, N-Disable)	Allow user to specify whether carry market price in the price field of Order input function
Quote Price from ORD ENQ	Selected Price in Order Enquiry (F6/ ORD ENQ) is quoted for order/trade input (Y-Enable, N-Disable)	Allow user to specify whether carry market price in the price field of Order input function