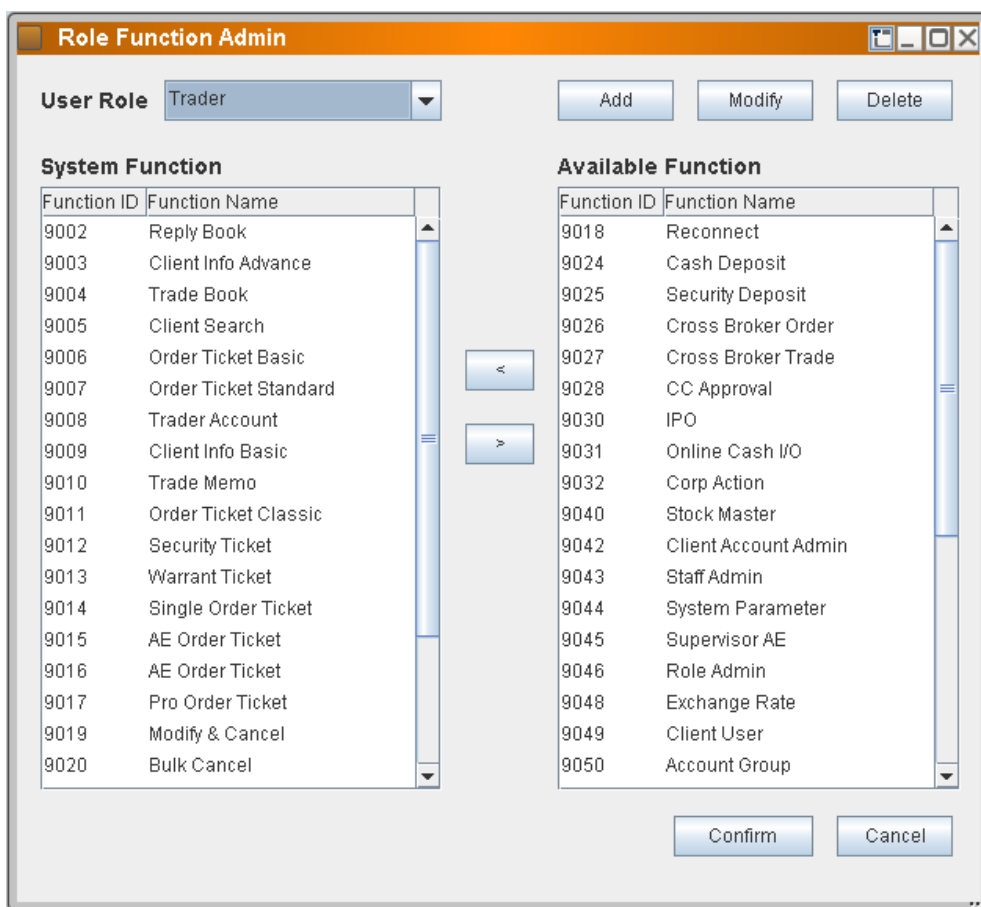


2.4.11 Role Function Admin

This function allows administrator define the user role functionality.

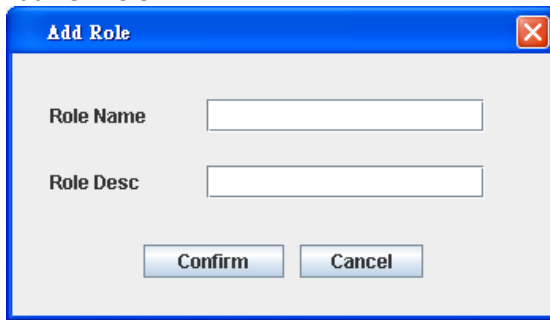


Add function to user role

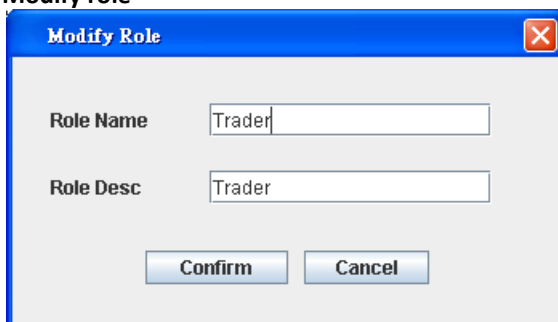
Step1: Select the user role from combo box> Step2: Select function from **Available Function** list > Step3: Press **Left** arrow button to relocate the selected user to **System Function** list and press **OK** button

Remove function from user role

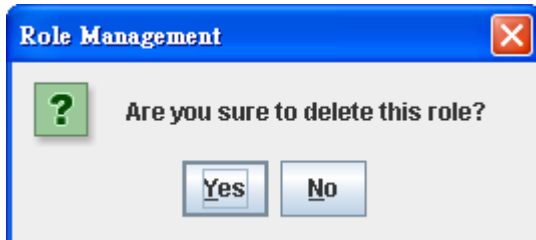
Step1: Select the user role from combo box> Step2: Select function from **System Function** list > Step3: Press **right** arrow button to relocate the selected user to **Available Function** list and press **OK** button

Add new role

Step1: Press **Add** button > Step2: Add role window will be prompted then fill the role name and role description of new role > Step3: Press **Confirm** button to save

Modify role

Step1: Select the role from combo box and press **Modify** button > Step2: Modify role window will be prompted then modify the role description of new role > Step3: Press **Confirm** button to save

Delete role

Step1: Select the role from combo box and press **Delete** button > Step2: Confirmation box will be prompted then confirm the deletion by pressing **Yes** button